



# INDOFINE Chemical Company, Inc.

121 Stryker Lane, Bldg. 30, Suite 1 • Hillsborough, NJ 08844 • U.S.A.

Phone: (908) 359-6778 • FAX: (908) 359-1179

website: [www.indofinechemical.com](http://www.indofinechemical.com)

e-mail: [chemical@indofinechemical.com](mailto:chemical@indofinechemical.com)

## CERTIFICATE OF ANALYSIS

Cat No.: D-015

Product: **2,4-DIMETHOXYBENZALDEHYDE**

CAS Number: [613-45-6]

Lot Number: 1010079

Chemical Formula: C<sub>9</sub>H<sub>10</sub>O<sub>3</sub>

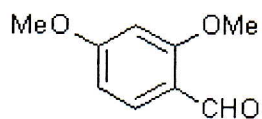
Molecular Weight: 166.18

Melting Point: 68-72°C

Appearance: Off white crystalline powder

Storage: Cool dry place

Purity: 99.7%



D-015



# INDOFINE Chemical Company, Inc.

121 Stryker Lane, Bldg. 30, Suite 1 • Hillsborough, NJ 08844 • U.S.A.

Phone: (908) 359-6778 • FAX: (908) 359-1179

website: [www.indofinechemical.com](http://www.indofinechemical.com)

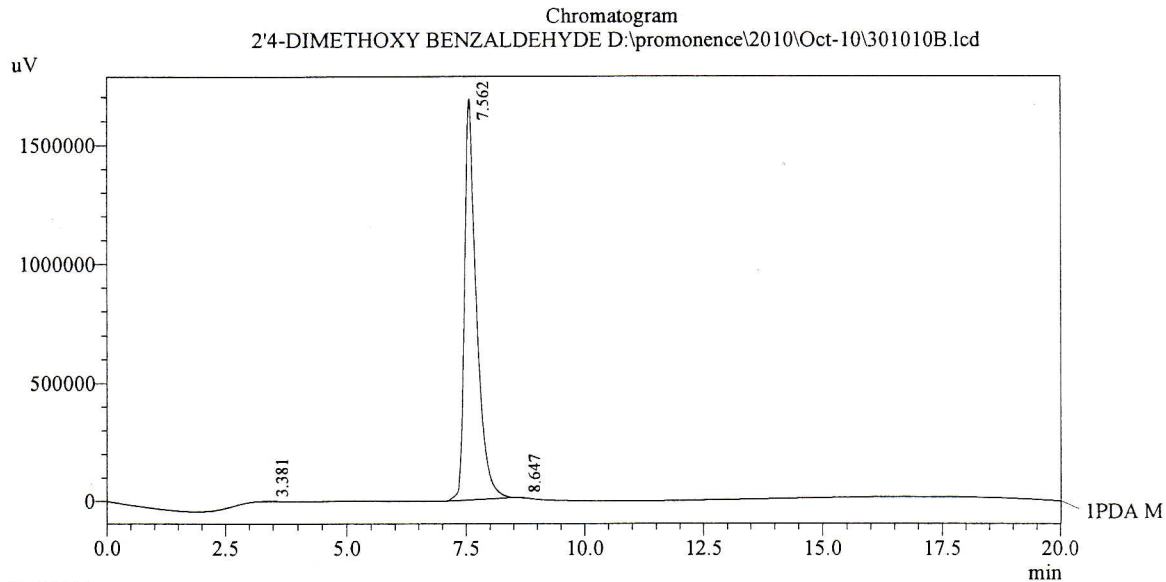
e-mail: [chemical@indofinechemical.com](mailto:chemical@indofinechemical.com)

## HPLC ANALYSIS

Date Acquired : 10/30/2010 11:26:25 AM  
Acquired by : Madhuri  
Sample Name : 2',4-DIMETHOXY BENZALDEHYDE  
Sample ID :  
Injection Volume : 20 uL  
Data Filename : 301010B.lcd  
Method Filename : Linear Isocratic.M.lcm

Cat. No.: D-015  
Product: 2,4-Dimethoxybenzaldehyde  
Lot No.: 1010079

Description:  
Column : Inertsil C-18, 250X4.6mm 5.0µm  
Flow : 0.500ML/min.  
Mobile Phase : A(20% of 0.05% TFA) B(80% ACN)



PeakTable  
PDA Ch1 240nm 4nm

Peak#	Ret. Time	Area	Height	Area %
1	3.381	31013	1730	0.106
2	7.562	29093368	1687198	99.777
3	8.647	33942	2734	0.116
Total		29158323	1691661	100.000